



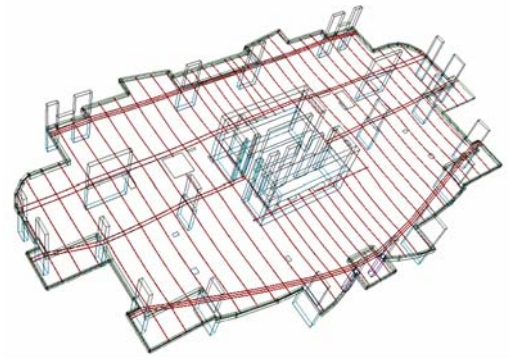
ADAPT-Builder® 2010

Structural Concrete Design Suite: ADAPT-Floor Pro, Modeler, MAT and SOG

ADAPT-Builder is a three-dimensional (3D) Finite Element software for analysis and design of concrete slab and foundation systems. Built on ADAPT BIM Technology, this software provides a powerful, yet easy to use tool for the analysis, design and investigation of all types of elevated floors and mat foundations, both conventionally reinforced and post-tensioned. ADAPT-Builder's true 3D FEM analysis provides the industry's most accurate results even for the most complex transfer and waffle slabs. Its Dynamic Rebar Design (DRD)™ module gives structural engineers complete control over the design and detailing of mild reinforcement, leading to optimized designs. Its BIM-based modeling approach supports a unique bi-directional integration with the leading BIM platform, Revit® Structure.

Key Features:

- Generates a true 3D solid model of an entire floor system
- Imports various file and model formats
 - DWG/DXF files
 - REVIT® Structure model (1:1 bi-directional integration)
 - ETABS model (geometry, lateral, and gravity loads)
- Uses Component Technology to assemble an entire floor system using structural components, such as slab regions, walls, columns, drop panels, and openings.
- Models slabs, steps above and below the slab, and beams
- Generates sections for easy verification of complex geometries
- Automated tendon generation and optimization
- Supports live load patterning and automatically reduced live loads, where applicable
- Performs a detailed finite element analysis of the entire floor systems and its supporting structure
- Calculates cracked section and long-term deflections and provides graphical output of extent of cracking in slabs and beams
- Specify typical top and bottom reinforcement mesh
- The user can easily define support lines - even for complex geometries, which can be exported to strip programs PT and RC
- Automatically generates all critical design sections
- Column strip / middle strip option
- Performs code check and reports the location and amount of reinforcement needed
- Calculates and checks punching shear stresses
- Designs punching shear reinforcement (shear stud or stirrup)
- Generate both graphical and tabular reports
- Edit graphical rebar layout report to optimize rebar layout
- Export rebar and post-tensioning structural drawings directly into AutoCAD
- Integrated Vibration analysis for all or part of floor system



Supported Design Codes:

- ACI-318 (1999, 2005 & 2008)
- IBC (2006 & 2009)
- British-BS8110 (1997)
- Canadian-A23.3 (1994 & 2004)
- Australian-AS3600 (2001)
- Brazilian-NBR6118 (2001)
- Indian IS456 (2005 reprint)
- European EC2 (2004)
- Hong Kong-CoP (2007)
- Chinese-GB50010 (2002)

ADAPT-Builder® Design Suite Programs:



ADAPT Corporation
Redwood City, CA, USA

ADAPT International
Kolkata, India

ADAPT Latin America
Miami, FL, USA

ADAPT Europe
Zurich, Switzerland

sales@adaptsoft.com www.adaptsoft.com Tel: +1 (650) 306-2400 Fax: +1 (650) 306-2401